

January 2012



THROUGH THE GRAPEVINE

January 24, 2012

Stacy's Furniture & Accessories

Community Room, 3rd Floor 1900 South Main, Grapevine

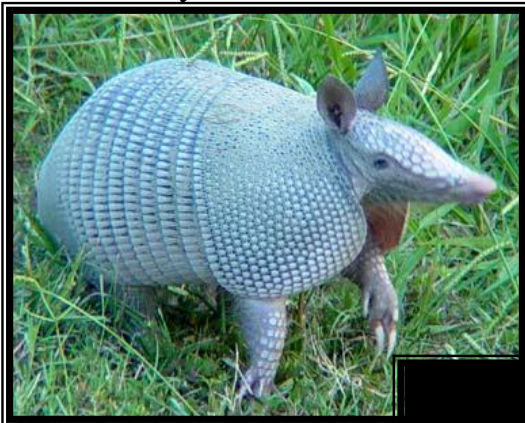
Social 9:30 A.M. Meeting and Program 10:00 A.M.

*We thank our members for continuing to carpool and to park in the outer slots
to allow Stacy's customers to park near the store entrance.*

THANK YOU TO OUR HOSTESSES: Chair, Pam Braak, Nancy Carlson, Linda Krimm, Karen Pafford, D'Ray Rice, Debbie Smith, Paula Wilson, Paula Willbanks

Grapevine Garden Club January Program

Bonnie Bradshaw will bring us information about critters we may encounter in our gardens such as opossums, squirrels, raccoons, etc. We will discover the most effective ways to permanently solve some common wildlife problems around our homes and yards.



President's Message

I sat down to write the President's message and the following thoughts came to mind:

- ♥ We celebrate a new year and take time for new beginnings.
- ♥ We try to remember to write 2012 on everything.
- ♥ We elect our new GGC officers.
- ♥ We celebrate our 80th year of serving our members and our community.
- ♥ We prepare for a big convention. Look out Grapevine – Texas gardeners will be here!
- ♥ We clean our garden spaces (or not!)
- ♥ We dream about spring.....



☞Karen Rice

Slate of Officers

The following slate of officers was selected by the Nominating Committee:

President – Karen Rice

Treasurer – Harriet Perrello

Recording Secretary – Kathy Stone

1st Vice President, Programs – Elayne Vick

2nd Vice President, Membership – Chris George

3rd Vice President, Communications – Theresa Thomas with assistance from Sharon Swagerty

Corresponding Secretary – Nancy Moxom

Publicity Coordinator – Joetta King

Additional nominations will be elicited from the floor. Voting for these offices will take place at the GGC general meeting, January 24, 2012.

2012-2013 Garden Club Year Committee Opportunities

Would you like to get involved in coordinating activities for the Grapevine Garden Club? We have a need to fill the following positions (a description of the position is on the corresponding Yearbook page), and we would love to have you get involved in our Executive Committee. The vacancies for the 2012-2013 fiscal year (June 1 to May 31), are for a Plant Sale Coordinator (YB pg. 13), Ways & Means / Other Chairman (YB pg. 13), and a General Meeting Hostess (YB pg. 11). If you are interested in more information or would like to volunteer, please contact Karen Rice. We can guarantee that you will have fun and learn a lot in the process as you provide a valuable service to the club!

Yearbook Updates

There will be a GGC Yearbook update package available at the January General Meeting. Please pick up your copy near the Membership sign-in table.

☞ **Chuck Voelker – Yearbook**

Save the Dates!

Date	Event	Location
January 18	Garden Club Council General Meeting	Fort Worth Botanic Garden
February 14	West Texas Street Work Day	West Texas Street
February 14 – 15	All Texas Garden Show	Arlington Convention Center
February 17 – 20	Great Backyard Bird Count	Your own backyard!
February 27, 2012	Spring District II Convention	Fort Worth Botanical Gardens
March 22 – 24, 2012	Spring Texas Garden Club Convention	Grapevine
May 4, 2012	Redbud Tree Program	Grapevine Colleyville ISD
May 12, 2012	Grapevine Garden Club Sale of Heirloom Plants	Grapevine

January Birthdays

Suzi Agnew
 Eloisa Beller
 Susan Boelens
 Marion Brekken
 Margaret Brinson
 Suzie Cate
 Madeline Fitzgerald
 Suzi Guckel
 Vickie Haines
 Linda Harris



Ann Hatch
 William Hilfiker
 Mona Levingston
 Therrie Mazur
 Nancy Moxom
 Katherine O'Connor
 Ruth Price
 Kathy Stone
 Paula Wilbanks

West Texas Street Work Day
February 14, 2012 – 10:00 A.M.

It is time to prune the roses on West Texas Street. I can't think of a better way to spend Valentine's Day morning than to spend time with friends visiting and working in the garden. Let's all wear our fun, mucking-around boots and see if we can get a colorful collage of all our feet. Doesn't that sound like fun? Wear your boots, bring your pruning shears and weeders, and let's get together and dig in the dirt. If you have any questions about this project, call Suzi Guckel. See you Valentine's Day.

☞ Suzi Guckel, Chair
West Texas Street Project



Carole Lee and Rene Herndon

GOING ONCE, GOING TWICE, SOLD!

Our Garden Club will be raffling off four baskets at the Texas Garden Club State Spring Convention in March. To accomplish this, the club is asking for donations from the membership for the following items.

- ♥ Our *wine basket* will include wine glasses, wine, after dinner liqueurs, cheese and crackers, cheese plate, cheese utensils, wine jewelry, cocktail napkins, wine opener, and wine sleeve.
- ♥ The *bath basket* will include bath oils, fizzing soaking powders, bath sponges, lotions, perfume, bath slippers or flip flops, and bath wrap (towel). The *travel basket* will contain a small canvas "overnight" bag, a \$25 Barnes and Noble gift card, a scarf (pashmina), compact umbrella, and a sun visor.
- ♥ Our *home basket* has already been completely donated.

These are suggestions and we welcome any items that could embellish the themes. Let's have fun with this and get creative! I have no doubt that when the baskets are completed they will be superb and everyone will want one. And I also know how very giving and receptive our members are. I am counting my blessings now and thanking you for your generosity. Contact Valerie Reed for your donations or questions.

☞ Valerie Reed

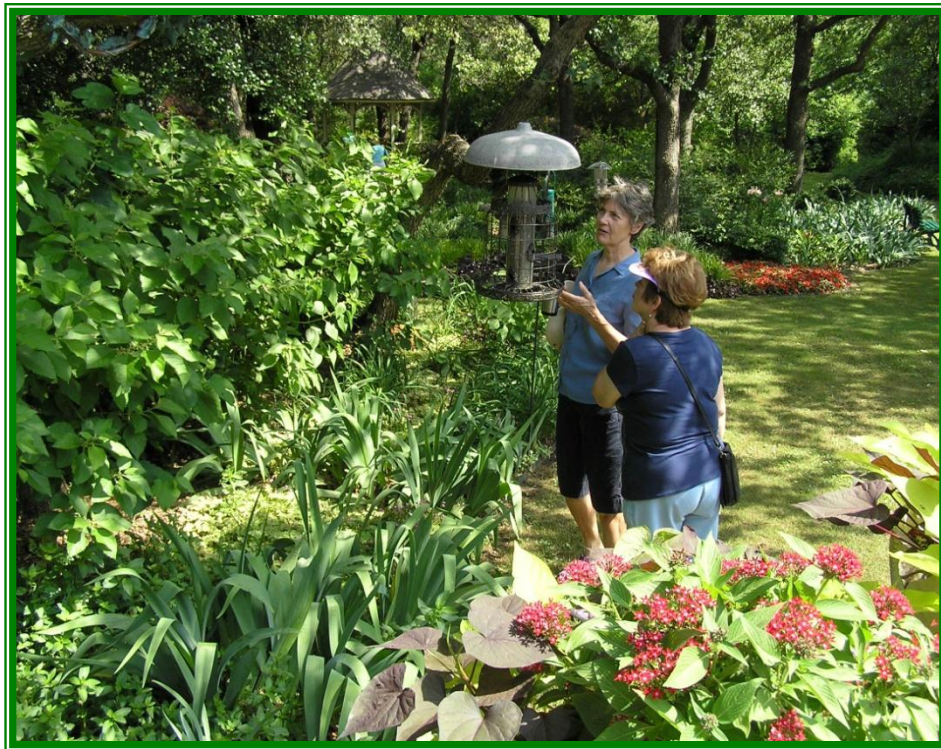
Birding Opportunity in Grapevine and Southlake Awaits You

Having a little extra time, I scanned the continuing projects in the GGC yearbook to see if the tours scheduled for this year are meeting the club's objectives. The entry on page 52, CP16 - Bird Identification, indicates that I should be planning a bird identification walk for members. If you took your binoculars on the tour to the Lewisville Lake Environmental Learning Area, would that qualify as completing this tour objective? Maybe not! But do you know, sometimes we just need to take advantage of what is being offered locally and at no cost.



During the last couple of years, members have had the opportunity to visit Ray and Dinah Chancellor's gardens to study what is needed to have a backyard wildlife habitat. Dr. Chancellor also gave a wonderful program on converting your garden into a year-round birding habitat. Through this exposure, you must realize that Ray Chancellor, an active birder for over 40 years, is offering amazing bird hikes locally.

He is actively involved in efforts to preserve our area's natural history and ecosystem.



Kathy Dohrer and Elayne Vick in the Chancellor gardens

As a novice birder on a recent birding hike with Chancellor, I must admit that the majority of the birds sighted as we walked the Bob Jones Park Trail were a mystery to me. I realized that I should have brought a pencil and paper to jot down the birds seen so that I could study the plumage field marks that were described by Chancellor. Those pesky birds didn't always hold still long enough for me to study overall size, shape, and colors or such details as eye ring, bill shape, and wing bars.

Enjoying the colorful foliage of elms and sumac, seeing the autumn sun glowing behind the seed tufts of grasses, and learning about the diversity of plants supporting wildlife in this peaceful setting confirms how important it is that these habitats be preserved, not just for wildlife but for our own appreciation.



However, I would not be comfortable walking these natural areas by myself. For one thing, I would definitely get lost. Those dirt trails through woodland and grassland seemed to meander in an unidentifiable manner. But why go by yourself when you can enjoy the company of like-minded folk under the leadership of an expert in our local flora, fauna, habitat, and wildlife.

I probably will not plan a bird hike strictly for GGC members, because you would probably enjoy the experience more if you were with a smaller group. Although the number varies, most of Chancellor's hikes have less than a dozen attending.





If you are interested in taking a bird hike, take advantage of those offered by Ray Chancellor! All you have to do is send an email, raychancellor@aol.com, and get on his notification list for birding hikes. He will send you a list of upcoming hikes and directions to the meeting site. You then just select the hike that suits your schedule, travel to the site, and enjoy a couple of hours strolling along nature trails. Don't be surprised by how much you will learn or collect. Soon you, yes even you, may be spotted gathering scarified persimmon seed from coyote scat to plant in your garden.

∞Joetta King
Gardeners on the Go Coordinator

The 15th Great Backyard Bird Count (GBBC) Is Coming!

What is the Great Backyard Bird Count? It is a nationwide count of winter bird species that are to be found in thousands of locations across the country jointly sponsored by Cornell University and the National Audubon Society. Participants can count birds right in their own backyard from a minimum of 15 minutes a day to as much time as they can commit over the four day period. The results are used to develop a picture of bird populations, sudden population changes, movements for wintering birds, and possible disease effects. It simply gives a snapshot of the bird health in America.

The 2012 GBBC will take place Friday, February 17 through Monday, February 20. Please join us for the 15th annual count! You can be either a beginner or an experienced bird watcher. The GBBC is a wonderful opportunity to involve the whole family in a valuable science study. The GBBC is important to help the Bob Jones Nature Center get a snapshot of the 2012 wintering bird population. Those results are used in many of our educational programs and in the study of the local ecosystem. Help us by getting involved! The more eyes we have the better the picture will be of the changing populations in the area.



Male Downy Woodpecker

In years past, it has not been uncommon to get over 100 species locally. With local habitat loss, it is important that we monitor the population changes that are occurring.



Male Baltimore Oriole

Go to <http://www.birdsource.org/gbbc/> to get a complete description of the GBBC and how you can be directly involved. The best part—there is no cost. Benefits from participation include a listing of local birds, joining eBird—a nationwide database of birds at each location, a photo page of observed birds, and your own personal printout.



Male House Finch

The Bob Jones Nature Center will have staff present during operating hours to answer birding questions. The Southlake Ornithological Society will support the Bob Jones Nature Center with several special walks to count birds in the area. On February 17, the walk will be along the North Walnut Grove Trail beginning at 8:00 a.m. in the parking lot at the very north end of White Chapel Road. On February 18, the walk will be along the Bob Jones Park Trail beginning at 8:00 a.m. in the parking lot across from the dog park in Bob Jones Park. On February 20, the walk will be in the Bob Jones Nature Center (BJNC) beginning at 8:00 a.m. in the BJNC parking lot.

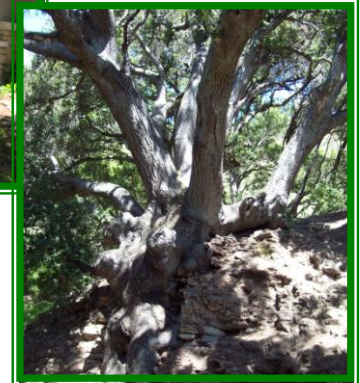
January 2012

There are some things you can do now that will make the count even better. Start a bird feeding program that includes sunflower feeders, suet feeders, thistle feeders, and ground feeding. These feeding stations will bring in many wintering birds that typically are seen only along the trails.

Get involved and help the Bob Jones Nature Center with this important science project.



☞Ray Chancellor



Just wanted to send the Grapevine Garden Club an update on how I have been doing. Stephen F. Austin has been a very different experience for me. It is such a bigger school with so much to do. It's been great. Classes are harder of course than at Weatherford. I have been very busy lately and as I dive into the last two weeks of school it's going to be very busy for me. Classes are going well. I am learning so much it seems and I cannot wait to start to reach those higher level classes. With all the rush of school I was able to get a job at the local bike shop, so that is helping me stay busy and working on bikes is really fun. I am sorry that I have not sent you an email in a while since school has kept me busy. I am looking forward to a long Christmas break to get ready for next semester. It's hard for me to believe that it's almost over. It has gone by so fast. Hope that you had a great Thanksgiving!

Sincerely,
Peter Reigelman
GGC Scholarship Recipient

Grapevine Botanical Gardens Greenhouse Progress Report

GOAL: \$150,000

At the conclusion of 2011, the Greenhouse project has received donations of \$11,279! The committee has also applied for a \$7500 grant from the Southlake Women's Club Foundation. We want to thank GGC members who made donations and Karen Rice and Pam Braak who worked on the SLWF grant proposal.



With your help, the dream will become a reality.

In addition, the Garden Culture Garden Club, Rolling Hills Garden Club, and Hemphill Garden Club made donations toward the project. In the coming weeks, the committee will be identifying and submitting more grant proposals and will be contacting local businesses and organizations to solicit support for the project.

Check out the Grapevine Garden Club website www.grapevinegardenclub.org for more information about the greenhouse. Click on the Greenhouse Project tab. You may download a donation form from the website if you would like to make a contribution. Watch the vine grow as we go forward in 2012.



LANDSCAPING WITH ROSES 2012

Farmers Branch Community Recreation Center
14050 Heartside Place, Farmers Branch, Texas
Tuesdays 7:00 - 8:30 PM

The City of Farmers Branch is co-sponsoring with the Dallas Area Historical Rose Society and the Dallas Rose Society a series of six classes that will share ideas using the ultimate landscape plant - THE ROSE. Learn which varieties make a great drought tolerant addition to your landscape. A pruning clinic plus an opportunity to order roses are included. Attendance at five classes plus the pruning clinic will qualify the attendant to a free personalized 30 minute landscape consultation.

The first class on January 10 by Landscape Designer and Consulting Rosarian, Carolyn Hayward, is on “Color in the Rose Garden - Journey from Gardener to Designer”. Carolyn will talk about turning a collection of plants into a pleasing landscape.

Following on January 17 will be Dr. Steve George on “EarthKind Roses - Lessons from the Garden - Top Performers in the National EarthKind Trials”. Dr. George will discuss the promising stars from the Farmers Branch Rose Gardens and other participating gardens. These roses performed with only three supplemental waterings during the extreme summer of 2011.



Katy Road Pink
2006 EarthKind Rose of the Year



Knockout EarthKind Shrub Rose

On January 24, the class will join the Dallas Area Historical Rose Society meeting in hearing Master Consulting Rosarian and National Rose Show Judge, Mike Becker, present the acclaimed program “Fragrance in Roses”. Mike has over 35 years of experience growing roses. His own private garden is home to over 500 rose plants. There will be a time to share refreshments at 6:30 P.M. before the 7:00 class.

January 2012

President of the Dallas Area Historical Rose Society and Master Consulting Rosarian, Claude Graves, will present the program “A Classic Collection of Roses for the Metroplex” on January 31. Claude has traveled the world visiting rose gardens and learning from the roses. He has been an integral part of the EarthKind Team and an active member of the research team on the Easy Tea Hybrid Tea Research Program. His own garden is a regular on area garden tours.

February 7, Rosarian and Garden Designer, Dr. Peter Schaar, will address the topic of “Rose Pruning”. Dr. Schaar will present the basics on pruning roses of all classes. This will provide the preparation for the hands-on clinic that follows on Saturday, February 11 at 10:00 A.M. in the Gussie Field Waterworth Park. Bring leather gloves and pruners to perfect your skill on somebody else’s roses.

Again on February 28, the class will join the Dallas Area Historical Rose Society meeting where Mark Chamblee, owner of Chamblee's Roses in Tyler, will present the topic “Roses Bred for Toughness - Buck Roses and Kordes Roses”. Many of the roses that will be discussed can be found throughout Farmers Branch. There will be a time to share refreshments at 6:30 P.M. before the 7:00 class.

All classes are at the Farmers Branch Community Recreation Center located at 14050 Heartside Place. *Attendance is free but registration is requested.* Call 972-247-4607 to reserve your place for one or all. The classes are Tuesdays 7:00 - 8:30 pm unless otherwise noted. The clinic is in the rose garden in Gussie Field Waterworth Park, 2610 Valley View. For more information contact Pam Smith, 972-919-2625.

✂Pam Smith
Park Landscape Manager
City of Farmers Branch



Provided by: City of Farmers Branch

Rawhide Creek, Gussie Field Waterworth Park