

THROUGH THE GRAPEVINE



TUESDAY, SEPTEMBER 28, 2010

Stacy's Furniture & Accessories

Community Room, 3rd Floor

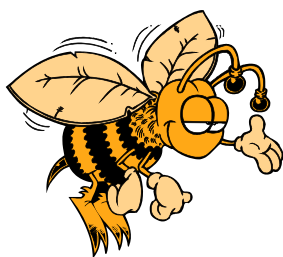
1900 South Main, Grapevine

Social 9:30 A.M.

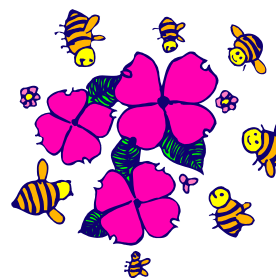
Meeting and Program 10:00 A.M.

We thank our members for continuing to carpool and park in the outer slots to allow Stacy's customers to park near the store entrance.

THANK YOU TO OUR HOSTESSES: Jo Ogletree (Chair), Sharon Steele, Linda Barraclough, Ella Barber, Gloria Land, Anne Hogue, Marcie Junge, and Joan Kowalski.



SEPTEMBER PROGRAM
“CCD - Colony Collapse Disorder”
Brandon and Sue Pollard



Since the 1960s worker bees have been disappearing from seemingly healthy hives. Bees pollinate billions of dollars worth of fruits and vegetables each year nationwide. And if they are threatened so is our food supply. This is a critical situation. Possible explanations for the bees' disappearance include viruses, fungi, pesticides, genetically modified crops and climate change.

Brandon and Susan Pollard of the Texas Honeybee Guild will discuss this situation. They will explain how they have worked to expand the healthy beehives in Texas and to protect the insects that are crucial in agriculture and horticulture. What are scientists doing to identify the cause of these losses? What can we do to aid in protecting this important insect?

SEPTEMBER 2010

PRESIDENT'S MESSAGE

Welcome to the start of the 78th year of the Grapevine Garden Club! Our club has a long and proud history. This year gives us a new start to another great year, a year of a "Garden of Opportunities" for each one of us. I am proud to report that our officers and committee chairs have been busy over the summer planning and organizing programs and activities that will be enjoyable and inspirational.



I hope each one of you will take the time to participate in all the opportunities this year presents. We have programs, trips and tours, gardening projects, educational presentations, and best of all the chance to have a great time being with good friends and making many new ones.

Our club has grown at an amazing rate. We will have a large number of members, new members, and visitors at each meeting. Please take time to introduce yourself to people whom you have not yet met. Ask someone who comes to the meeting for the first time to sit at a table with you. This is a sure-fire way to make a wonderful new friend and help someone feel comfortable at their first meeting.

Our first opportunity this year will be a program about the importance of honeybees to our gardens and the threat to the bees' existence. I hope to see you all at Stacy's on September 28th!

Sarah Erickson, President

LET'S CELEBRATE

WELCOME TO OUR
NEW MEMBERS
WHO JOINED DURING
THE SUMMER:

Lyvon Overton - Carrollton
Theresa Thomas - Haltom City



GGC MEMBERS CELEBRATING
A BIRTHDAY. IN SEPTEMBER:

Barbara Atkins
Marilyn Bayer
Patty Brown
Al Capone
Jenny Capone
Diane Cauwels
Rachel Clark
Peggy Harris
John Parkinson

Peggy Reyher
Mary Rossman
Shari Stanfield
Bea Stevenson
Lisa Stokdyk
Marty Swindell
Beckie Underwood
Elayne Vick
Edie Williams

SEPTEMBER 2010

CALENDAR OF EVENTS

Date	Event	Location
Sept. 15	Forth Worth Garden Club Council Meeting. Program: Fall Potted Plants for the Home.	Fort Worth Botanical Garden (FWBG)
Sept. 25	North Texas Daylily and Fort Worth Iris Sale	FWBG
Oct. 5-7	Flower Show School I	FWBG
Oct. 7-10	Native Plant Society of Texas Symposium	TWU in Denton
Oct. 9	FWBG Fall Plant Sale	FWBG
Oct. 17-19	Texas Garden Clubs, Inc Fall Convention	Tyler

GARDENS ON VIEW TOUR: SOUTHLAKE

Tuesday, September 28, following the GGC General Meeting

Bring a sack lunch and pause at one of the tour gardens to have a relaxing conversation with friends in a lovely setting.



All three homes are about 1 ½ miles from each other in Southlake. Directions will be sent out via email a few days before the general meeting. Some printed copies will also be available at the meeting. Please RSVP to Marge Carpenter (page A-9 2009-2010 Yearbook) if you plan to attend, so she can provide the garden hosts with an estimate of expected guests.

Laurie Williams' home. Laurie joined our club last year and she has that proverbial green thumb. She can grow anything! She likes to think outside the box and her beautiful eclectic gardens reflect that.

Ebie Nametz's home. Ebie is a new GGC member who moved here last year from New Jersey. She moved into a new house with a clean yard palette to work with and has succeeded in creating several lovely outdoor "rooms."

Beckie Underwood's home. Beckie joined us within the last couple of years, and she also has a green tint to her thumbs. Besides being a member of GGC she co-heads the Southlake Perennial Garden Club. Her gardens show off her love of flowers and plants.

SEPTEMBER 2010

GARDENERS ON THE GO UPCOMING ROAD TRIPS

Getting to know others with a common interest and making friends is a high priority for most of us. Traveling with Garden Club members on tours can achieve these goals. Plan ahead for joining us on upcoming road trips! Transportation to all locations will be by carpool groups or individually. Additional information regarding tours will be available by email, telephone or postal mail to those who express an interest in attending. The following tours are not suitable for children or pets.

Destination - Arlington

THURSDAY, SEPT 30

9:00 A.M. - 1:30 P.M.

Keeping It Green at Tierra Verde Golf Club
(no fee)

RSVP, YES ONLY - Joetta King by **Sept 28**

The tour is conducted via golf carts and led by Mark Claburn, Golf Course Superintendent. Lunch is "on your own." Consider the Ventana Grille at the golf course.



In an article titled "Keeping it Green," Mark Claburn wrote, "Tierra Verde means "green land" in Spanish; the definition also serves as an accurate description of Tierra Verde Golf Club. Tierra Verde began with the end in mind of creating a sustainable, eco-friendly golf club. The City of Arlington had land available for a new course in the far southern reaches of town and the decision was made to develop a sustainable golf club.

The primary areas of environmental focus of the program are wildlife conservation and habitat enhancement, water conservation and water quality protection, chemical use reduction and safety through integrated pest management, waste reduction and management, and energy conservation."

Mr. Claburn is a passionate conservationist and naturalist. His information will help us apply conservation in our residential landscapes.

Join Gardeners on the Go as we learn more about "Keeping It Green."

(continued)



WWW.GRAPEVINEGARDENCLUB.COM

SEPTEMBER 2010

GARDENERS ON THE GO
UPCOMING ROAD TRIPS, **cont.**

Destination - Farmers Branch

TUESDAY, OCTOBER 12. 9:30 A.M. - 2:00 P.M.

Farmers Branch Rose Gardens and Historical Park (no fee)

RSVP, YES ONLY - Joetta King by **Oct 8**

- Rose Gardens tour conducted by Pam Smith, City Park Landscape Manager
- Docent-guided tour at Historical Park conducted by Barbara Judkins, Museum Educator

Lunch is "on your own" in historic downtown Carrollton or Farmers Branch.

Rose Gardens

With more than 200 different roses planted in the town, Farmers Branch offers old garden roses, modern roses and roses yet to be released for public sale. Our tour will include the National Earth-Kind® Trial Rose Garden, which features over 100 rose cultivars in the study of environmental horticultural research and an All-America Rose Selection Test Garden dedicated to the introduction and promotion of outstanding new rose varieties.

Historical Park

The charming Historical Park is within walking distance or a short drive from the Rose Gardens. The front lawn of the 1885 Queen Anne Victorian Cottage boasts old garden roses. Built in 1856, the Gilbert House is the cornerstone of the Historic Park. You will also find a school house, the Old Church, log cabins, a railroad depot and several other historical buildings in a park-like setting. The garden (vegetables, herbs and cotton) next to the log cabin is maintained by Dallas Master Gardeners.



If you are unable to attend the GGC tour, consider attending RoseDango. The third annual RoseDango is set to celebrate the ultimate landscape plan October 16th and 17th in the Rose Gardens of Farmers Branch and the Chambersville Heritage Rose Garden. These two gems located in the Dallas Metroplex will host this two-day festival. While Rosie is the official hostess, RoseDango is much more than a celebration of these gardens and the ultimate landscape plant. There are many opportunities to expand your general garden knowledge. Topics include rainwater harvesting, companion plants, floral design, water conservation, organic gardening, composting and native plants. As an added attraction this year, RoseDango is a component of Bloomin' Bluegrass, a two day music festival in Farmers Branch. In Chambersville, local wineries will present their wines for tasting and enjoyment while touring the gardens. For the latest on schedules and programming - www.RoseDango.com

SEPTEMBER 2010

GARDENERS ON THE GO
UPCOMING ROAD TRIPS, cont.

Destination - Austin and Johnson City
TUESDAY, NOV 9 AND WEDNESDAY, NOV 10
RSVP YES ONLY - Joetta King by November 1

*Pack
a bag
and* **GO**

Hill Country Road Trip

The trip includes guided tours at the Lady Bird Johnson Wildflower Center in Austin and the Selah-Bamberger Ranch Preserve in Johnson City. Visits to local nurseries and group attendance at local restaurants will be optional. Currently there are 16 members planning to attend this tour. We always have fun. Sign up!

Accommodations - Fifteen rooms have been reserved for the GGC for Tuesday night at the Holiday Inn Express in Sunset Valley convenient to the Wildflower Center and easy access to the highway to Johnson City. The hotel is offering a discounted rate to our group (\$99/king & \$109/double-2 beds). Cut-off date for room block reservations is Oct 19. If you indicate that you are interested in attending this tour, you will receive additional information giving details on how to make reservations.

Wildflower Center - Founded in 1982 by Lady Bird Johnson and Helen Hayes to protect and preserve North America's native plants and natural landscapes. It is a national model for native plant gardens and a center for research in conservation and landscape restoration. The docent guided tour will be approximately one hour with additional time to shop the delightful gift shop.

Bamberger Ranch Preserve - Leopold Conservation Award Winner J. David Bamberger turns "the worst ranch in Texas" into a conservation showcase. The 5,500-acre ranch is known as a place where rock and eroded pastures became lush and green, and dry creeks and springs began to flow again. On the 3 ½ hour tour you will see the results of 37 years of habitat restoration. You will see projects which demonstrate principles of good stewardship. You may also see dinosaur tracks, fossil beds, a herd of endangered Scimitar-horned Oryx, and the Chiroptorium which is a man made bat cave designed to hold a million Mexican Free-tailed bats. You'll walk the nature trail and then enjoy seeing Madrone Lake. Transportation is on the Bluebonnet, an open air trailer with a shade bonnet, which will take us to all tour spots.

Tour Expenses - You will need to pay a tour expense fee of \$30 by November 1. Make the check payable to the Grapevine Garden Club and give it to Joetta King. This fee will cover the cost of the guided tours at the Wildflower Center and the Bamberger Ranch and miscellaneous tour expenses. Anticipated tour expenses not covered by the \$30 fee would include: hotel room, lunch & dinner meals and reimbursing carpool driver for gasoline.

There are so many things to see in the Austin area that you may decide to stay a second night.

WWW.GRAPEVINEGARDENCLUB.COM

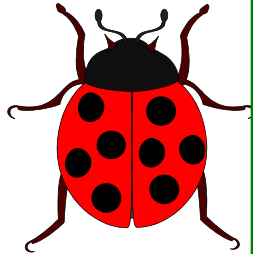
SEPTEMBER 2010

CLASSES FOR PRESCHOOLERS BEGIN
AT HERITAGE PARK
GRAPEVINE BOTANICAL GARDENS



Lovely Ladybugs

Date: **Tuesday, Sept. 21**
Time: 4:00 - 4:45 P.M.
Ages: 3-6 years of age
Location: Educational
Pavilion



Children will learn about the life cycle of a ladybug. They will make thumbprint ladybugs and pet ladybug rocks to take home. The children will listen to a related story book.
Cost: \$5

Pumpkin Patch

Date: **Tuesday, Oct. 19**
Time: 4:00 - 4:45 P.M.
Ages: 3-6 years of age
Location: Educational
Pavilion



Children will create a pumpkin vine to take home with them. Children will make rhythm instruments using pumpkin seeds. The children will listen to a related story book.
Cost: \$5



NATIVE PLANT SOCIETY OF TEXAS
OCTOBER 7-10, 2010

Save Texas One Landscape at a Time:
Our Native Plants Light the Future
Visit www.npsot.org/symposium2010 for details.
Email: Symposium2010@npsot.org
Plan to be in Denton!

WWW.GRAPEVINEGARDENCLUB.COM

SEPTEMBER 2010

KAREN'S KORNER

Karen Rice , wearing several GGC hats this year, has organized various events and activities to benefit GGC members:

PLANT IT PINK - LITERALLY!

In support of the National Garden Club 2011 initiative, "Plant It Pink," the Grapevine Garden Club will be offering a variety of pink hued spring bulbs at the October meeting. The bulbs will be available for members to purchase – bagged in small quantities. Part of the proceeds will benefit the "Plant It Pink" project. Stay tuned for more details in the October newsletter.



INTRODUCING A NEW LOOK FOR GGC T-SHIRTS

There will be a new style short sleeved Grapevine Garden Club T-shirt available for purchase at the September general meeting. A limited number of shirts have been ordered, so shop early at the T-shirt table to get your selection of color and size. Shirts are \$14.00. Make your checks payable to GGC.



TEXAS GARDENER MAGAZINE OFFER

Texas Gardener Magazine is a great resource for Texas specific gardening information. Subscriptions to the magazine will be offered through the Grapevine Garden Club, and will help benefit our Ways & Means funding for this year. There will be copies of back issues of the magazine available to peruse at the September general meeting along with a subscription sign up sheet. The bi-monthly subscription rates are:



1-year \$24.95 2-year \$42.95 3-year \$53.95.

Please make your checks payable to GGC.

DO YOU DIG IT?

To get us started with our Plant Sale "digs," we will be having a "dig and propagate" session at the Grapevine Botanic Gardens in the next few weeks. Lisa Grove will be available to give us pointers on starting plants from cuttings. These Plant Sale dig sessions are always fun, and we learn so much from Lisa and fellow members. Please join us if you can. Date and time details will be distributed via email.



WWW.GRAPEVINEGARDENCLUB.COM

SEPTEMBER 2010



MAKING A DECISION TO JOIN A HORTICULTURAL SOCIETY

By Joetta King



Your reason for joining the Grapevine Garden Club may be based on an appreciation for gardening, an interest in protecting, restoring and preserving America's landscape and a desire to protect wildlife and birds. If you haven't found Article 2 of the GGC bylaws, this might be a time to review the club's objectives. We believe in promoting horticulture and encouraging people to visit gardens! That leads us to explore public gardens as individuals and on GGC tours and a desire to support these public gardens.

It is hard to decide which society to support. Should it be the Dallas Arboretum, Fort Worth Botanic Society, Lady Bird Johnson Wildflower Center, Botanical Research Institute of Texas (BRIT) or one of the many other societies? Membership helps maintain the beauty of the gardens, supports the educational programs, helps pay for major projects in the garden and salaries for gardeners. Each is worthy of support.

How the society will benefit you personally may be the deciding factor. Memberships will give you free entrance to the garden of which you are a member as well as reciprocity admissions with other gardens in North America. The reciprocity number varies with the different societies.

It is more than a "season pass." You enjoy year round activities, music in the gardens, workshops and VIP invitations to certain special events. Nearly every membership entitles you to a 10% discount in the society's gift shop as well as discounts on educational programs and concerts. Wouldn't you like to shop at the society's annual plant sale before it is open to the general public? All these benefits may be offered with memberships. Other benefits include a subscription to a magazine and email newsletter.

With some memberships you will receive discounts from the society's associate nurseries and landscape professionals. Joan Kowalski is a member of the Dallas Arboretum and stated, "I use my DAB membership all the time at Calloway's Nursery for an extra discount even if I am using a Calloway's discount. It is quite a savings!"

You may be inspired to join the Dallas Arboretum while attending the October general meeting when Kathleen Cunningham of the Dallas Arboretum will be presenting the program. The DAB will be offering a 10% discount on new membership. The decision on what group you will support should be based on your particular interest and needs. That membership card will save you money sometimes while on a GGC sponsored tour!

SEPTEMBER 2010

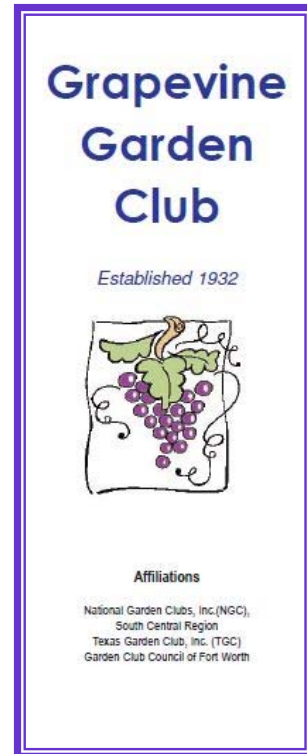
NEW 2010-2011 GGC BROCHURE

We have a newly printed brochure or small trifold for the Grapevine Garden Club. It tells about us and all our activities from September, 2010, through May, 2011. If you are preparing a display that can include some information about our club, or you see a place where these brochures would be useful, please ask one of the club officers for a supply.

The brochure contains our purpose, affiliations, the date of each month's meeting and the program, our ongoing projects, dates of our special events, last year's awards, where and when we meet, and our website address.

In other words, a small summary of everything we do in one package. You are welcome to put it to good use.

- **Elayne Vick**, Communications Director



Front Cover

GGC SCHOLARSHIP FUND AT WORK

Peter Reigelman, 2009-2010 recipient of a \$2,000 GGC scholarship, is attending Weatherford College, majoring in Forestry. His thank you note (below) affirms the hard work we put into the annual plant sale which supports one of GGC's primary goals - education.

Dear Grapevine Garden Club,

Thank you so much for awarding the scholarship to me through your organization. You don't know how much it means to me to be able to help pay in some way for my own education. I am glad that you recognize my interest in the field of forestry and assisting with my education.

I worked at Philmont Scout Ranch in Cimarron, New Mexico this summer and was promoted from Whiteman Vega program counselor (a back country mountain biking camp) to Conservation Specialist. My new position was right in line with my major. I led scouts in conservation projects on the mountain biking course helping to maintain it, during the course of the summer. During that time I led hundreds of campers in there conservation projects. I would give talks about the importance of conservation as it pertained to the surrounding land scape. Also how conservation played an important role in the outdoors. It was a very rewarding and educating experience that I will never forget.

Thank you again for awarding me one of your scholarships.

Sincerely,

Peter Reigelman

WWW.GRAPEVINEGARDENCLUB.COM

SEPTEMBER 2010

BUTTERFLY FLUTTERBY



It will soon be time for Grapevine's annual Butterfly Flutterby on **Saturday, October 16**. The Grapevine Garden Club booth will be right in the middle of the fun, which includes a parade, costume judging, and entertainment. There will be several butterfly releases as part of the migration of Monarch butterflies from Canada and the United States to their winter home in Mexico.

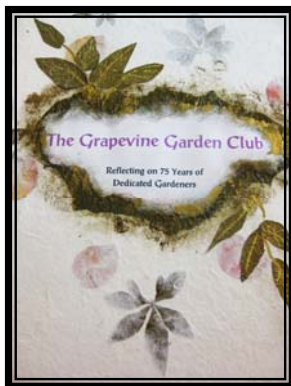
The GGC will be offering information, seeds and items for sale. We need volunteers to help with set up and staffing. We are collecting seeds and plants to be given out for starting gardens that attract butterflies. At the time of this event, we will particularly need caterpillars in any stage from your garden. The children love seeing the real thing, instead of just pictures.

This is a very enjoyable activity and we will have sign up sheets at the September GGC general meeting. If you would like to help or have anything that we might use, please contact Barbara Oldani via phone or email (page A-40, 2009-10 Yearbook).



Butterfly and Life Cycle

LOOKING BACK, 5th installment



We consider September the beginning of our Garden Club year. This is the traditional time we begin our application for annual awards from Texas Garden Clubs, Inc. We prepare award applications for work we do from January through December, which means we must write about what we intend to finish, and finish we must. This month our Looking Back article, the fifth in a series we began last February, is on awards and was written in 2007 by Barbara Atkins, president of the club in 2000-2001, for the club's 75th Anniversary Book. What she wrote is as true today as it was then.



HISTORY OF AWARDS RECEIVED

by Barbara Atkins

The National Garden Club Council and the Texas Garden Clubs, Inc. have established criteria for all affiliated garden clubs to follow when applying to the various entities for recognition of hard work well done. The excellent work we do as a club would not receive recognition by fellow members at District, State and National levels, nor would National and State Garden Clubs learn of our many worthwhile projects if we did not tell them how hard we work and how wonderful we are!

Our Club has applied for and has received a Gold Club Rating from Texas Garden Clubs, Inc. since 1990. This rating tells the rest of the gardening world that the Grapevine Garden Club performs numerous community service activities, provides scholarships to local students, participates in a Standard Flower Show; members share their gardening expertise with the community at our Plant Sale and with many groups in the area. Several members hold offices at Council, District and State levels. The Club contributes monies annually to local, State and National projects. All the above qualify our club for a Gold Club Rating.

While many of these “rules” may seem somewhat archaic and cumbersome, all participating clubs apply for awards under the same rules and are graded in each event based on the size of the club. Most awards are submitted through our District II for competition, and if eligible, the awards are forwarded to State and then National. This award process is repeated each calendar year and applications must be submitted to the Awards Chairman of our District before November 1. Certificates for the various awards are then presented at the District II and State Spring Conventions the next year.

Over the past 75 years, the Grapevine Garden Club has applied for and received many awards from District, State and National. Our Club has been rated Bronze, Silver and now, Gold. The Club has received awards for its beautification efforts in the City throughout the years, for its work with youth groups, and for educating the public by sponsoring educational evening programs. The Club received recognition for establishing the Heritage Garden as a teaching facility. The Club has recently been recognized for its work landscaping homes for Habitat for Humanity, and for providing hundreds of redbud trees to local school children.

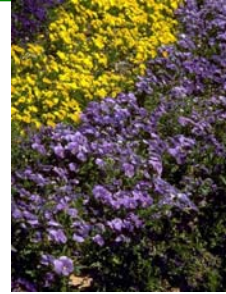
Prior to the 1973-74 year, the records for awards received are scarce. However, if awards information were available starting in 1935, it would show the Club’s priorities were planting hundreds of trees in Grapevine, educating the public through annual flower shows, preserving the history of the Depot and Torian Cabin, planting Texas Bluebonnets along Highway 114, and beautifying Grapevine’s streets. The Club continues that tradition: to beautify the community, promote interest in flowers and gardening, protect the birds and the native trees and educate the community in all these objectives. What a great legacy!

SEPTEMBER 2010

ELEMENTS OF LANDSCAPE DESIGN

By Toni Moorehead, Master Gardener

Tired of mowing and weeding that patch of lawn in your backyard? Or maybe you've been staring at another patch of lawn thinking, I'd sure love to have a flower bed in that spot. Then questions start to flood your mind, and you become overwhelmed with the thought of it, so you just crank up the mower one more time.



Well, there's no better time than the fall to plan, prepare, and plant a new bed. Most of us want to skip the first two steps and just get to the plants! Long before we ever stick one plant in the ground, though, we need to have a plan, a landscape design. But wait, you say, I'm not a landscape designer! How do I get started?

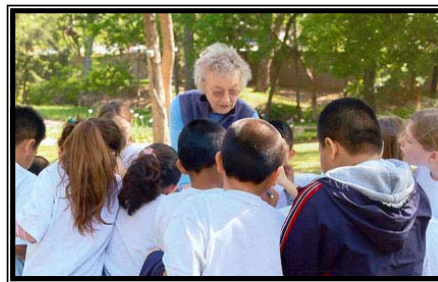
In an attempt to take away the fear of the unknown, I'd like to share some of the basic elements that go into creating a landscape design. According to horticulturist and author Greg Grant, the five essential elements of landscape design are scale, balance, dominance, unity, and repetition. Those may sound like a lot of fancy and scary words, but here's my take on them.

- Scale means keeping the plant material in *proportion* to the size of the beds and surrounding structures. Translation: Don't plant small plants in large spaces or next to large structures and don't plant large plants in small spaces. Be sure to consider the mature size of the plants. A one-gallon shrub may look like the proper scale in a small space, but how will it look when it is full grown?
- Balance refers to the visual "weight" of the plant material from one area of the landscape to another; i.e., don't plant all of the large plants on one end of the design and all of the small plants on the other side. Visually draw a line down the middle of a space and balance the plant material on each side of that imaginary line.
- Dominance is another way of saying "focal point," a feature (or plant) in your garden that you want to take center stage. What do you want your eye to be drawn to in a particular space?
- Unity is the landscape as a whole working together, different elements of the garden, but all flowing together in harmony. Maybe another way to say it is that your garden has a "theme." For instance, a mophead hydrangea would look out of place in the middle of a xeriscape garden (not to mention probably dead!)
- And lastly, but certainly not least, is repetition. Repetition is rather self-explanatory. It just means repeating certain elements of the design throughout the landscape; repeating forms, textures, colors, sizes, or plant materials. We've all seen gardens where only one type of each plant has been planted, giving it that busy "confetti" look. Repetition of plant material, on the other hand, helps to create unity in your garden. And I say, hey, if you find a plant that works well in your garden, just use more of it in different areas of your garden, and *voila*, you've got repetition...and unity. See? That wasn't so scary NOW, was it?

As you visit other gardens (or look at your own), see if you can spot these elements of landscape design. Start gathering ideas and inspiration for your next garden project — and maybe you'll be able to put that mower to rest after all.

GRAPEVINE BOTANICAL GARDENS DOCENT OPPORTUNITIES

The Grapevine Botanical Gardens Docents are already hard at work with tours of the gardens and children's activities. Opportunities for helping in the gardens are:



Marion Brekken assisting eager children.

- ✧ **Tuesday, October 5**, 9:15 - 11:00 A.M. Faith Christian School is bringing thirty-eight second graders for arts, crafts and stories, followed by a brief tour of the gardens and a sack lunch on the grounds.
- ✧ **Sunday, October 17**, 2:00 - 3:00 P.M. The National Charity League Class of 2013 (15-16 year olds) will have a general tour of the gardens.
- ✧ **Saturdays, October 2, 9, 16, 23**, 6:30 - 8:30 P.M. Sunset Concert Series at the Botanical Gardens needs docents for youth activities during intermission.

Please contact Barbara Thompson (page A-55, 2009-10 Yearbook), docent Coordinator, if you are a trained a docent and can help with any of these activities.

WE WANT TO HEAR ABOUT YOUR SUMMER VACATION

Did you go anywhere exotic or wondrous? Do anything unusual? See and take photographs of unique gardens? Please share your summer adventure with the GGC membership. Starting with the October GGC newsletter we will begin a series entitled "Amazing Summer Vacation." Email a brief summary of your outing to Kathy Dohrer (page A-15, 2009-10 yearbook). If possible, include pictures to help with the description.

Harriet Perrello will provide the first installment, an excerpt from her month-long trip to Scandinavia and Scotland.

